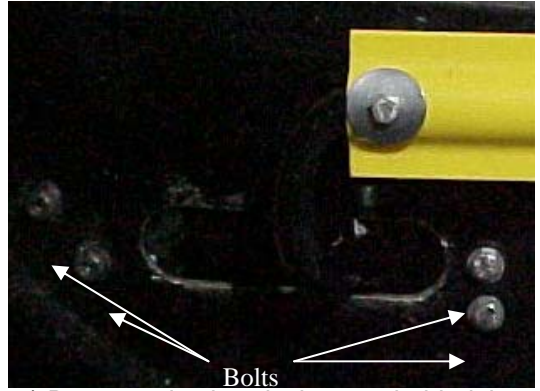


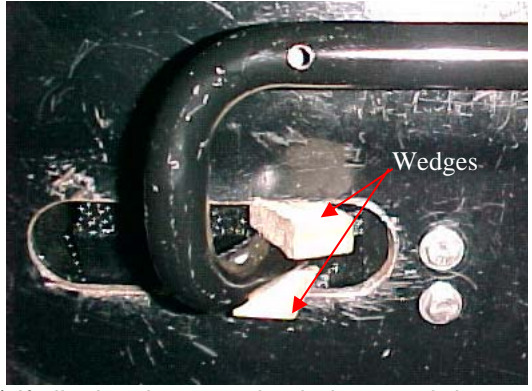
VERTICAL ALIGNMENT OF INTEGRATED ARMS THAT FALL BELOW MAGNET IN CLOSED POSITION:



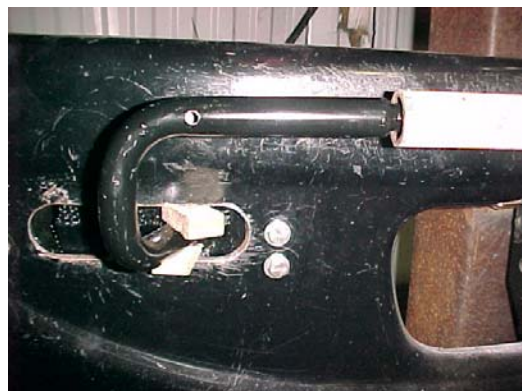
1.) Crossing arm will be in the fully closed position and the arm will fall below the magnet or be above it.



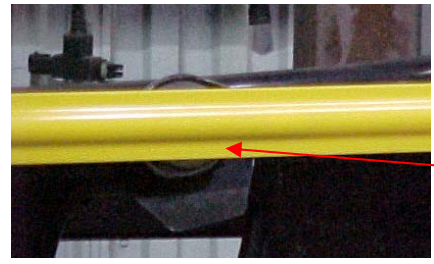
2.) Remove plastic splash cover behind the bumper. Loosen the four bolts shown above and align control unit until arm is level & contacts the magnet. Re-tighten the four bolts evenly torque to 10 ft-lbs. Install plastic cover.



3.) If aligning the control unit does not bring arm into alignment (contact with magnet) remove yellow-poly rod & set aside. Install suitable wedges above & below arm protruding through slot in bumper.



4.) Slide a pipe over the arm protruding through the slot in the bumper and push up or down slightly as required. Fit yellow poly rod over to see if aligned & contacting magnet. If arm is in position install 1/4-28 bolts and formed washers. If arm is still out-of-line, remove yellow poly rod and bend again slightly using the pipe. Install yellow poly rod.



Magnet aligned with yellow poly rod.