



TECHNICAL BULLETIN - #A906
SUBJECT: **Re-Installation Instructions for 006120**
Effective Date: 11/02/09

To Re-mount the Hall effect sensor, align unit per figure 1.
Use one #8 washer (item 2), one spacer nut (item 3) and one nylon insert nut (item 16) per each of the three mounting holes.
Tighten the each nut to a maximum torque of 35 in#.
Vane rotation must be lined up with center of rotation and centered with air gap provided (see figure 3).
See figure 2 for wiring.
Reference Technical Bulletins #A002 and #A102 for further information.

ITEM	PART NO.	QTY.	DESCRIPTION
1	006120	1	MODULE, 6-SERIES CONTROL
2	000609	3	WASHER, #8 MACH. FLAT
3	000153	3	SPACER, 1/4-20 JAM NUT
4	005057	1	PIN, HINGE - INVERTED UNIT
5	005122	2	NUT, 1/2-20 HX WASHER WHIZ
6	000137S	4	SCREW, #10 X .5 HX HD
7	005176	1	BUSHING, 1/2" ID, NYLON W/ TABS
8	006123-10	1	BUSHING, 2" OD, 1/2" ID MOLDED
9	006041	1	SEAL, BUNA
10	006144	1	GASKET, 6-SER BUSHING
11	006137	2	SCREW, #10-32 X 5/8 SS SOCK HD
12	004048	2	NUT, #10-32 NYLON HEX
13	005165	1	SNAP RING
14	005164	1	WASHER, SS, 1" O.D.
15	004034	1	TERM, SPADE FORK
16	005832	3	NUT, #8-32 NYLON INSERT HEX



TECHNICAL BULLETIN - #A906
SUBJECT: **Re-Installation Instructions for 006120**
Effective Date: 11/02/09

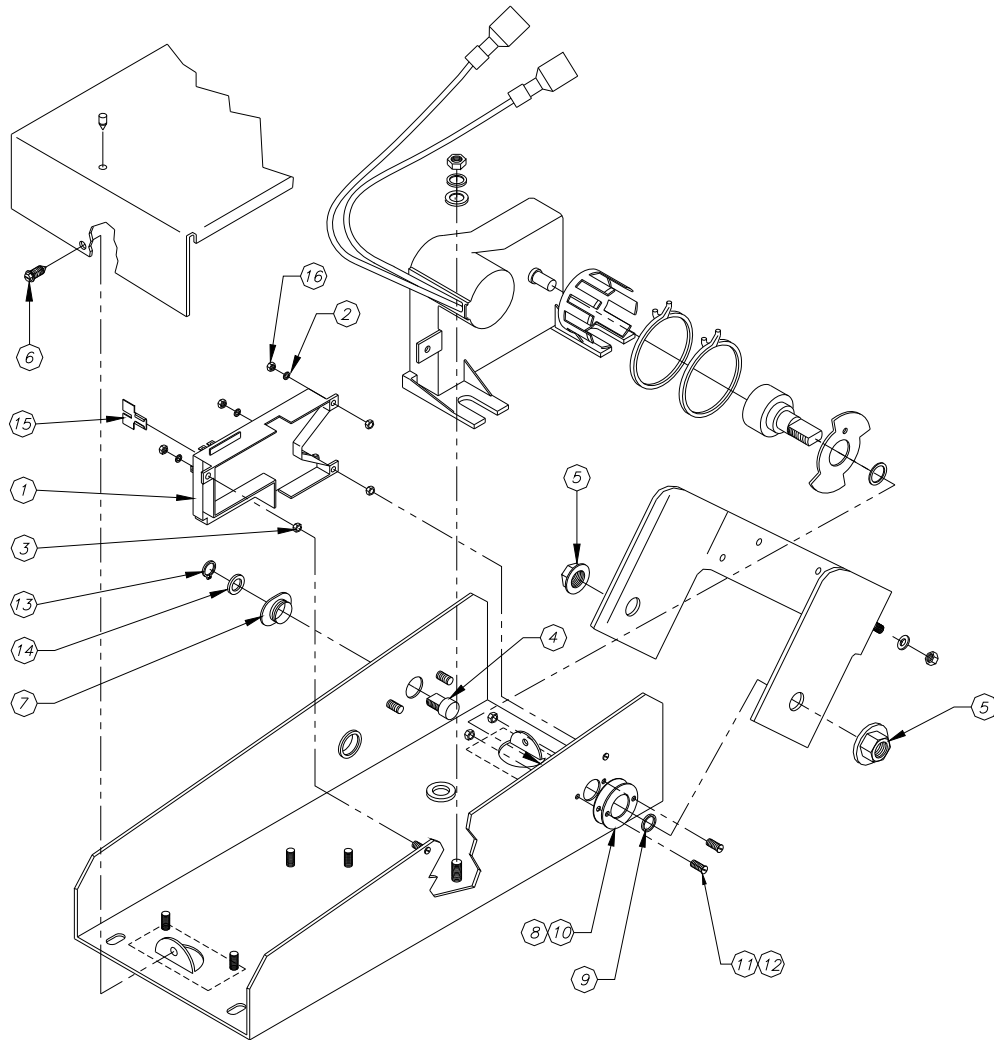


Figure 1



TECHNICAL BULLETIN - #A906
SUBJECT: **Re-Installation Instructions for 006120**
Effective Date: 11/02/09

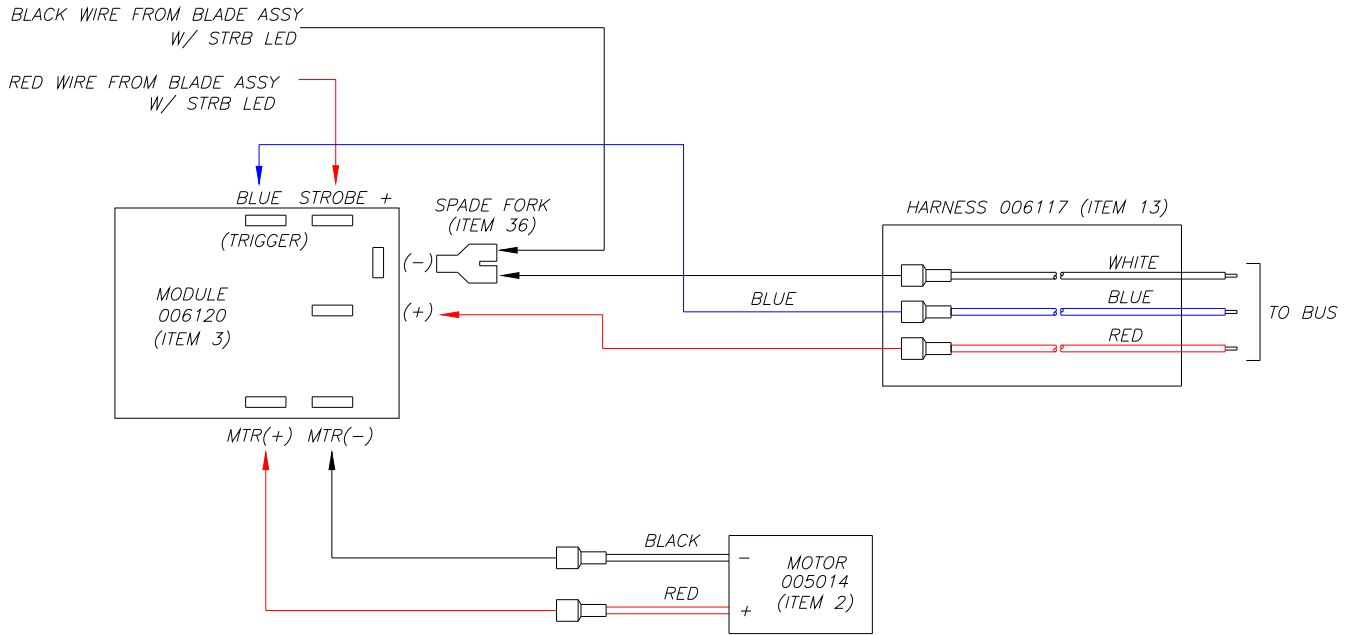


Figure 2

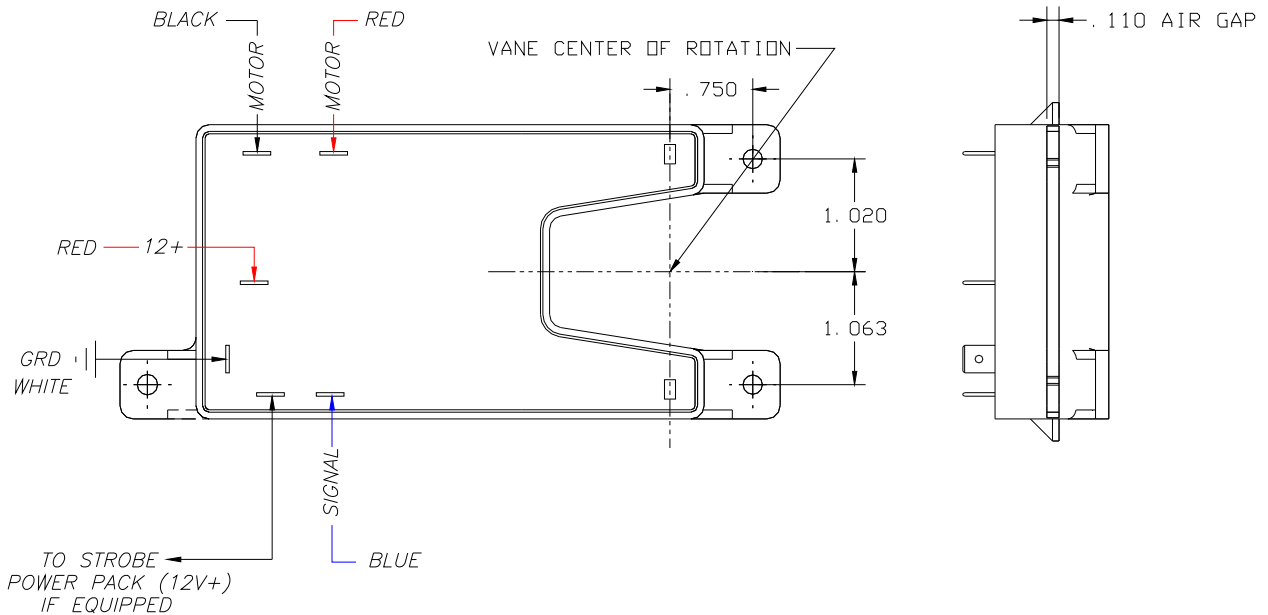


Figure 3